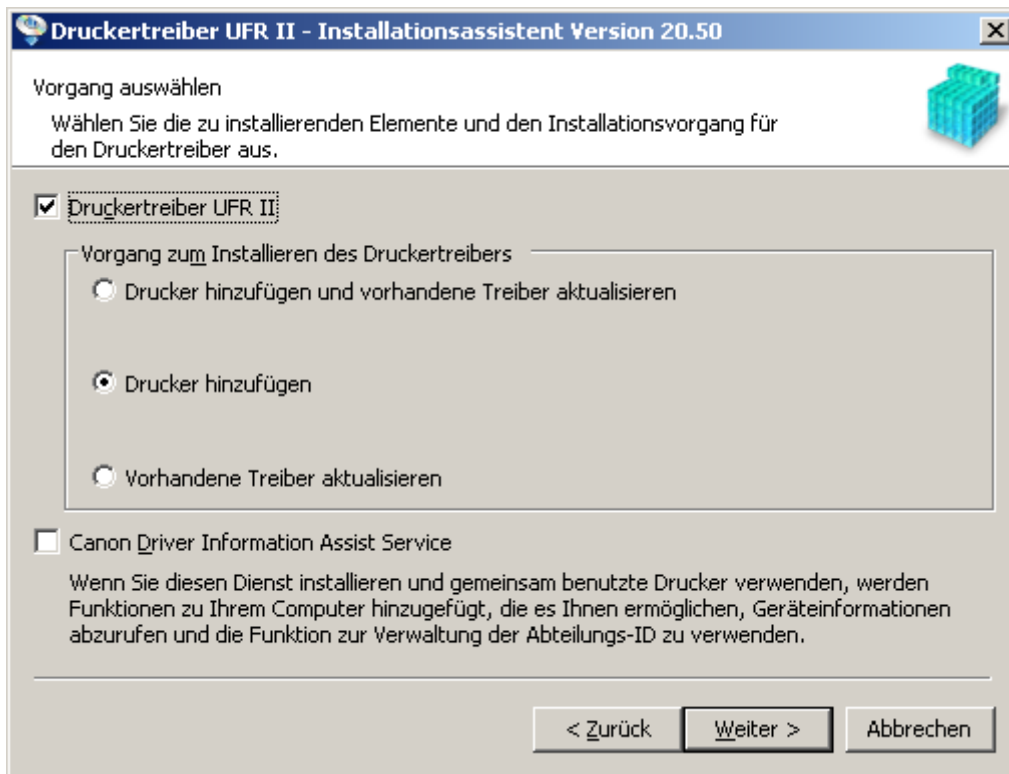


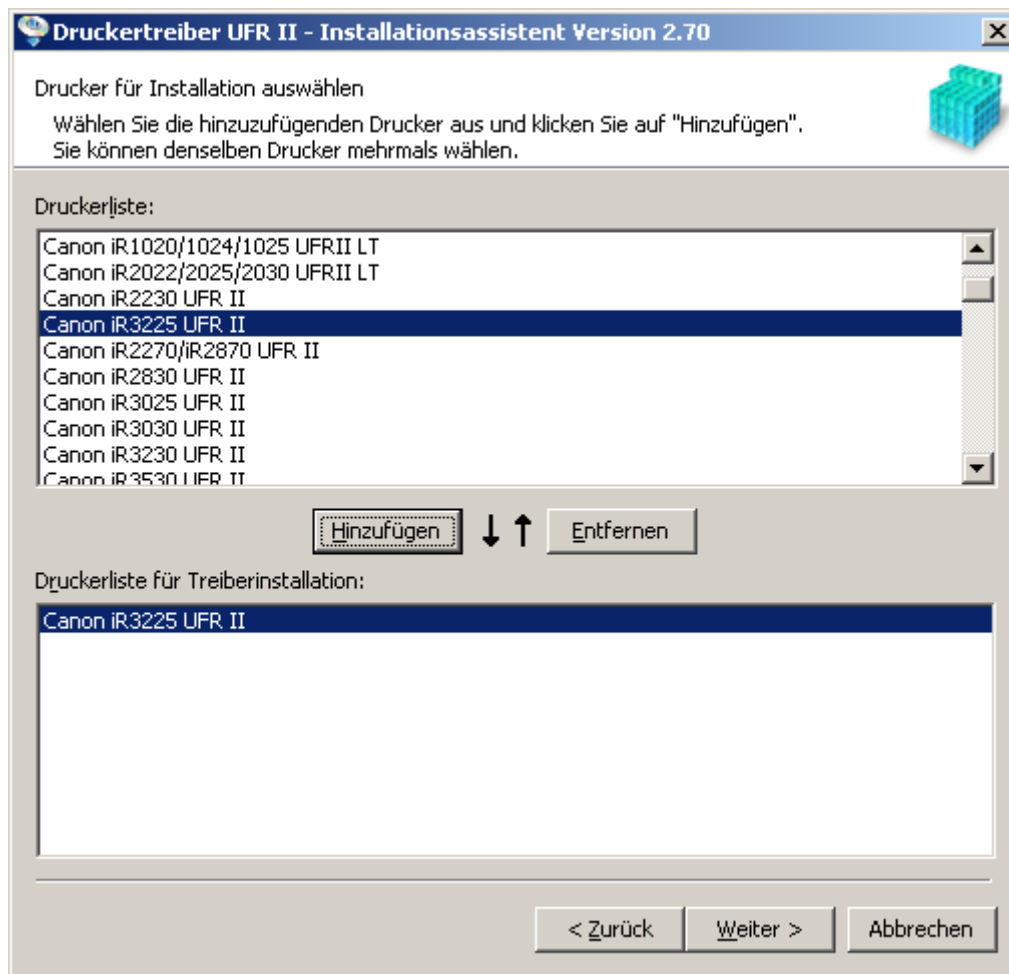
Installationsanleitung (SW-Drucker)

1. Download des Treibers für den Drucker Canon iR3225
2. Entpacken der Datei in einem beliebigen Verzeichnis
3. Aufruf der Datei „setup.exe“

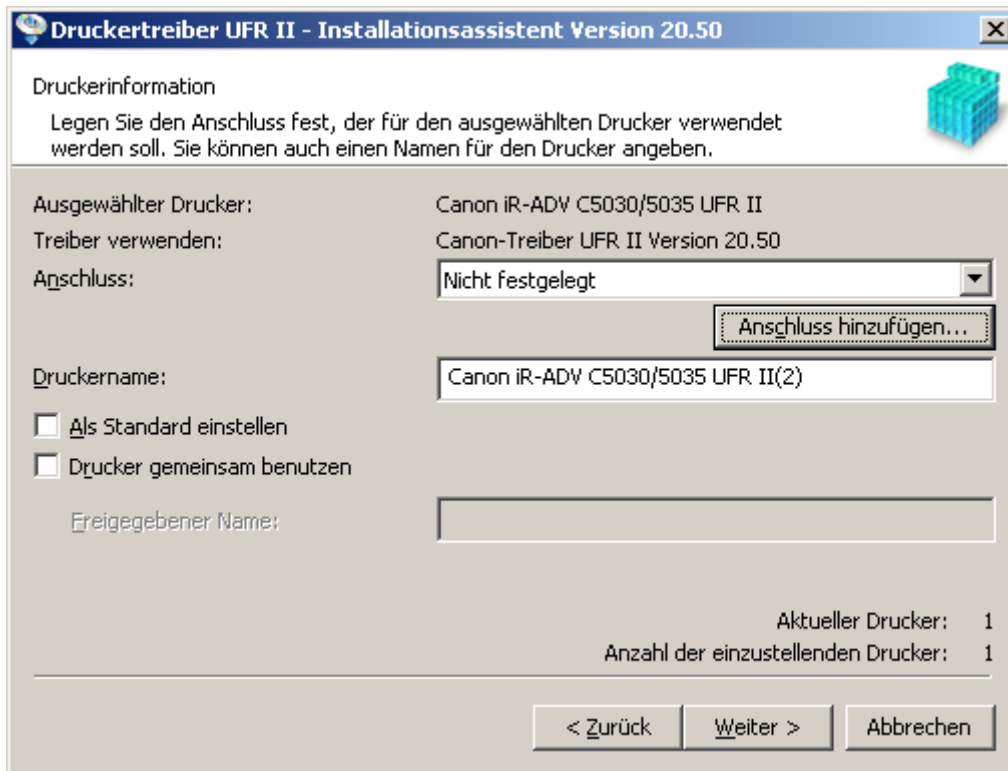




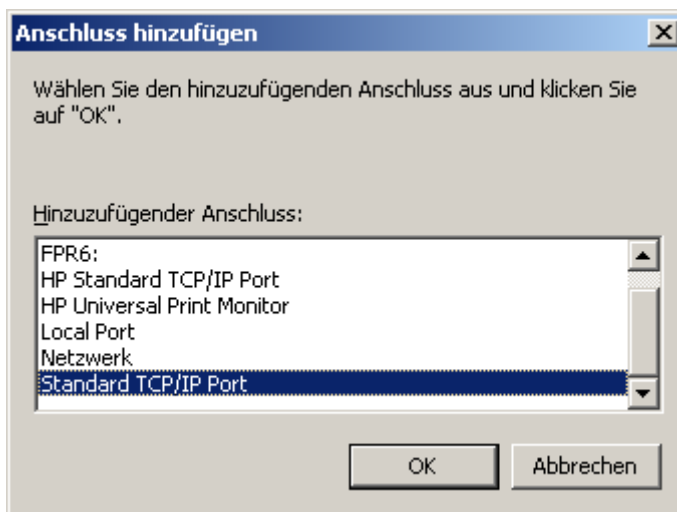
Weiter



Weiter



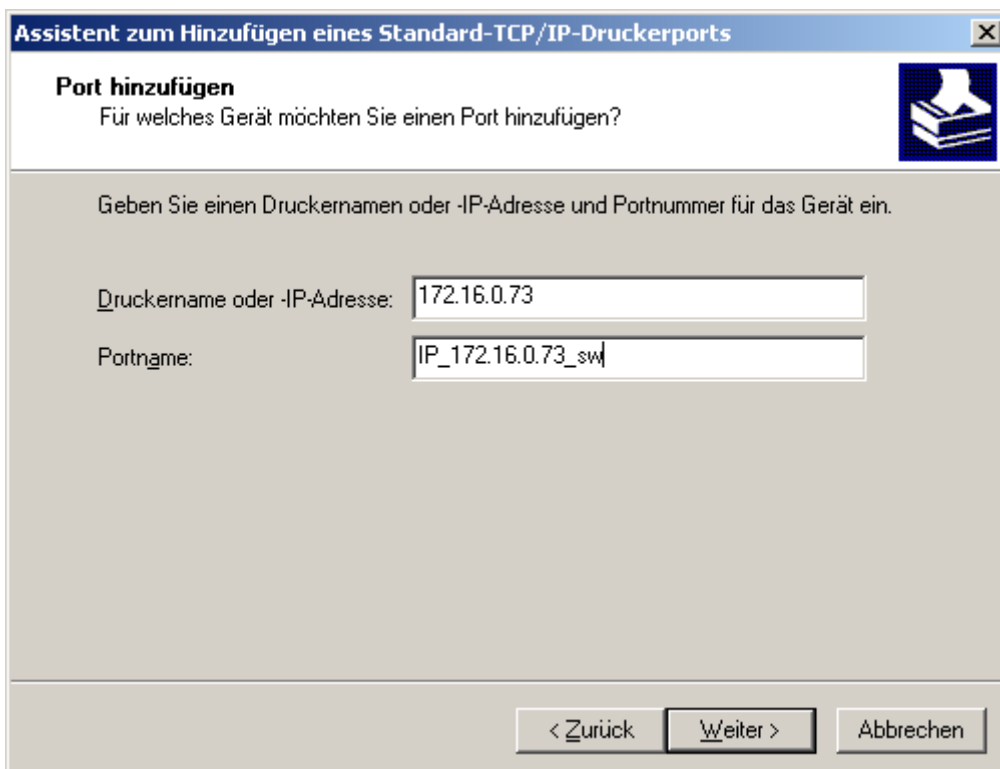
Anschluss hinzufügen



Standard TCP/IP Port
Ok



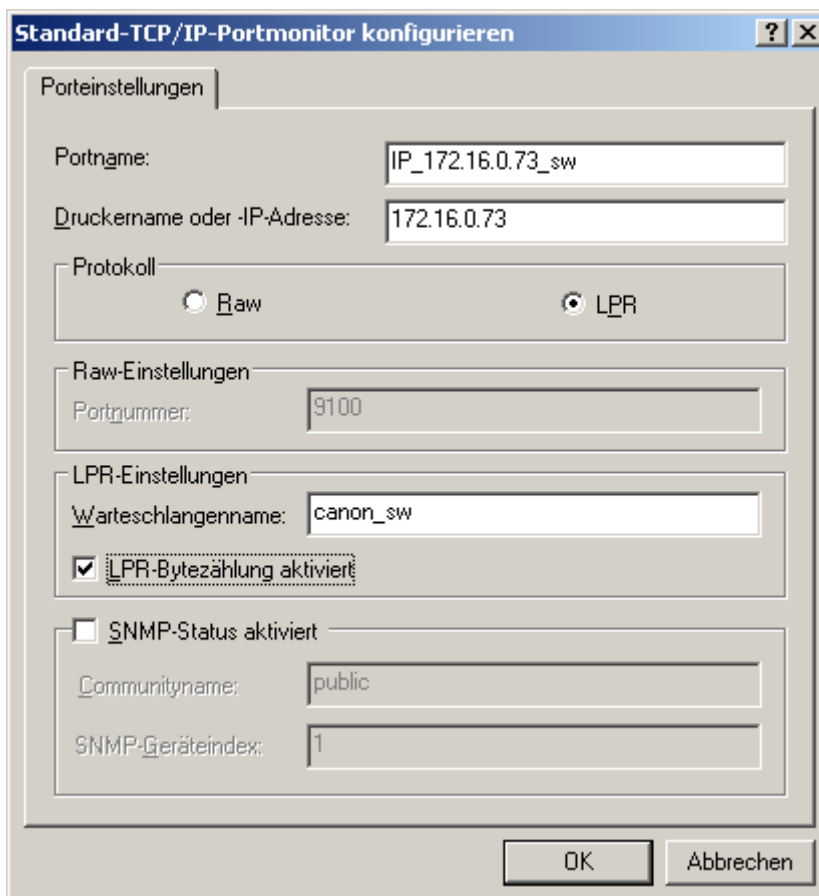
Weiter

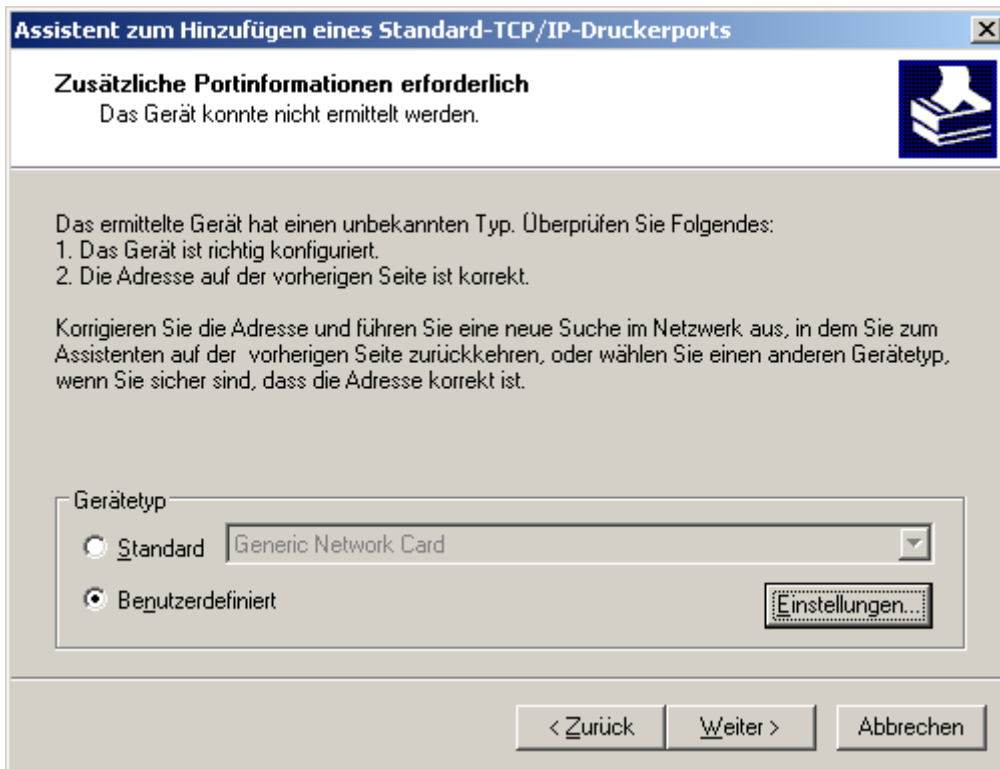


Weiter

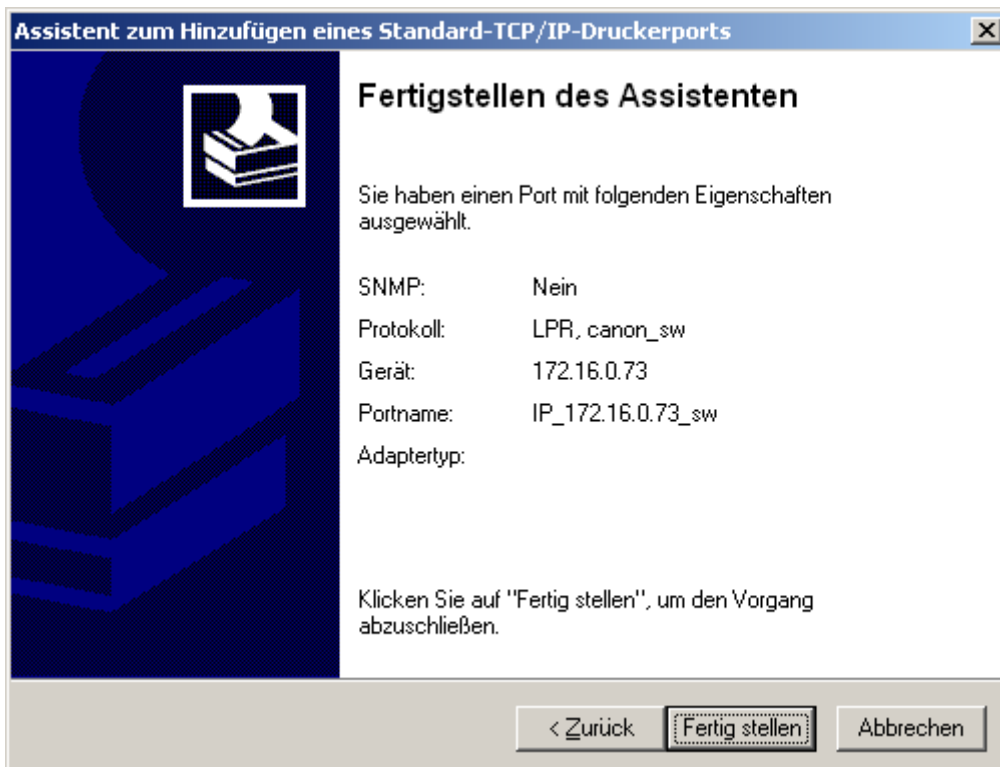


Einstellungen

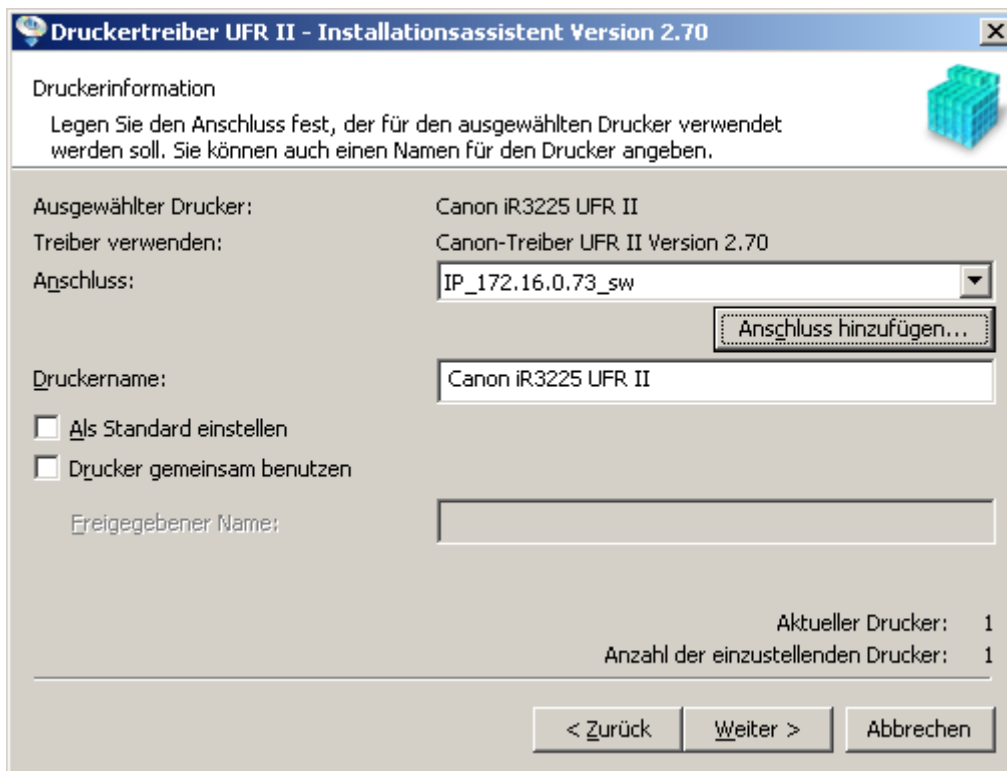




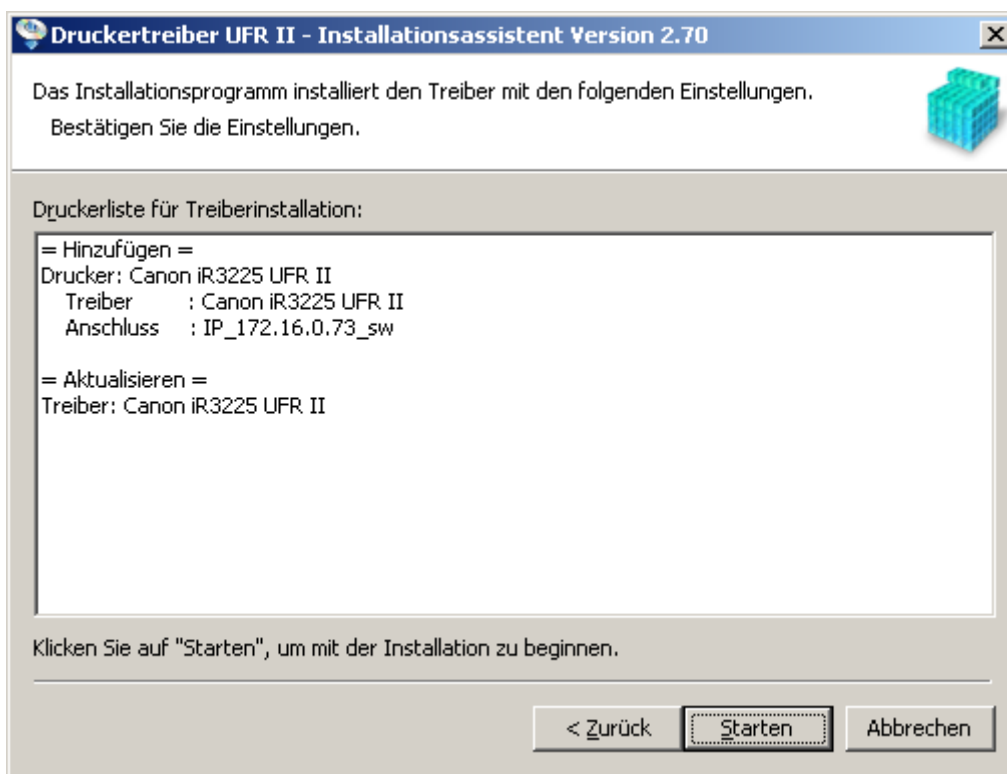
Weiter



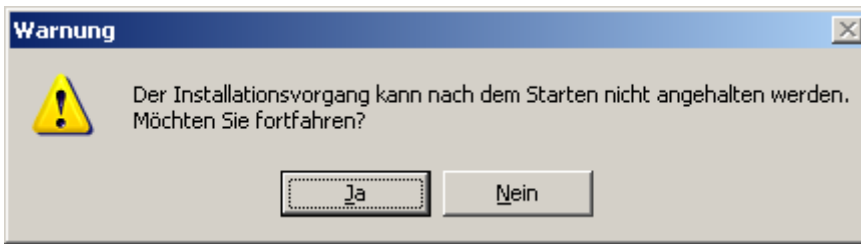
Fertig stellen



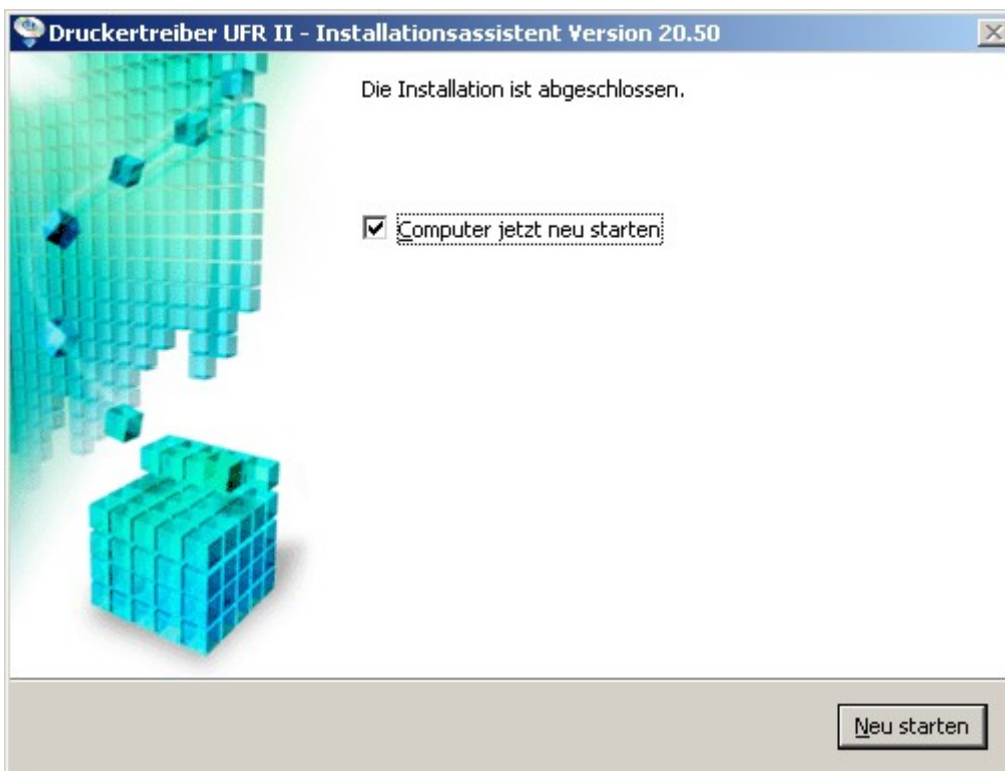
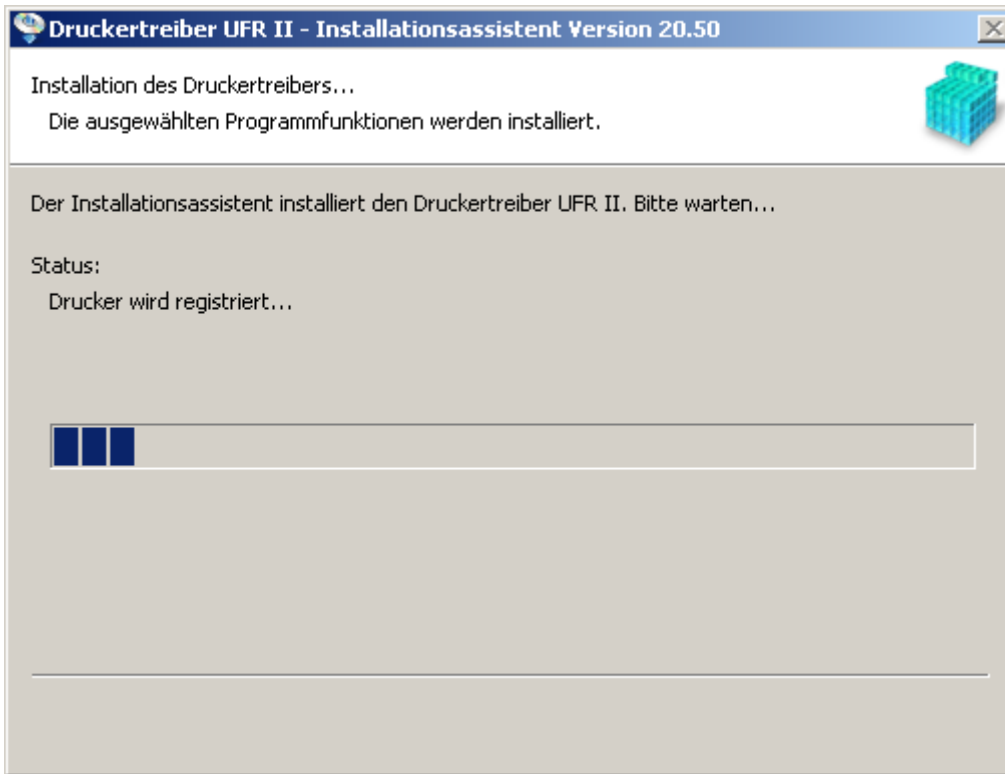
Weiter



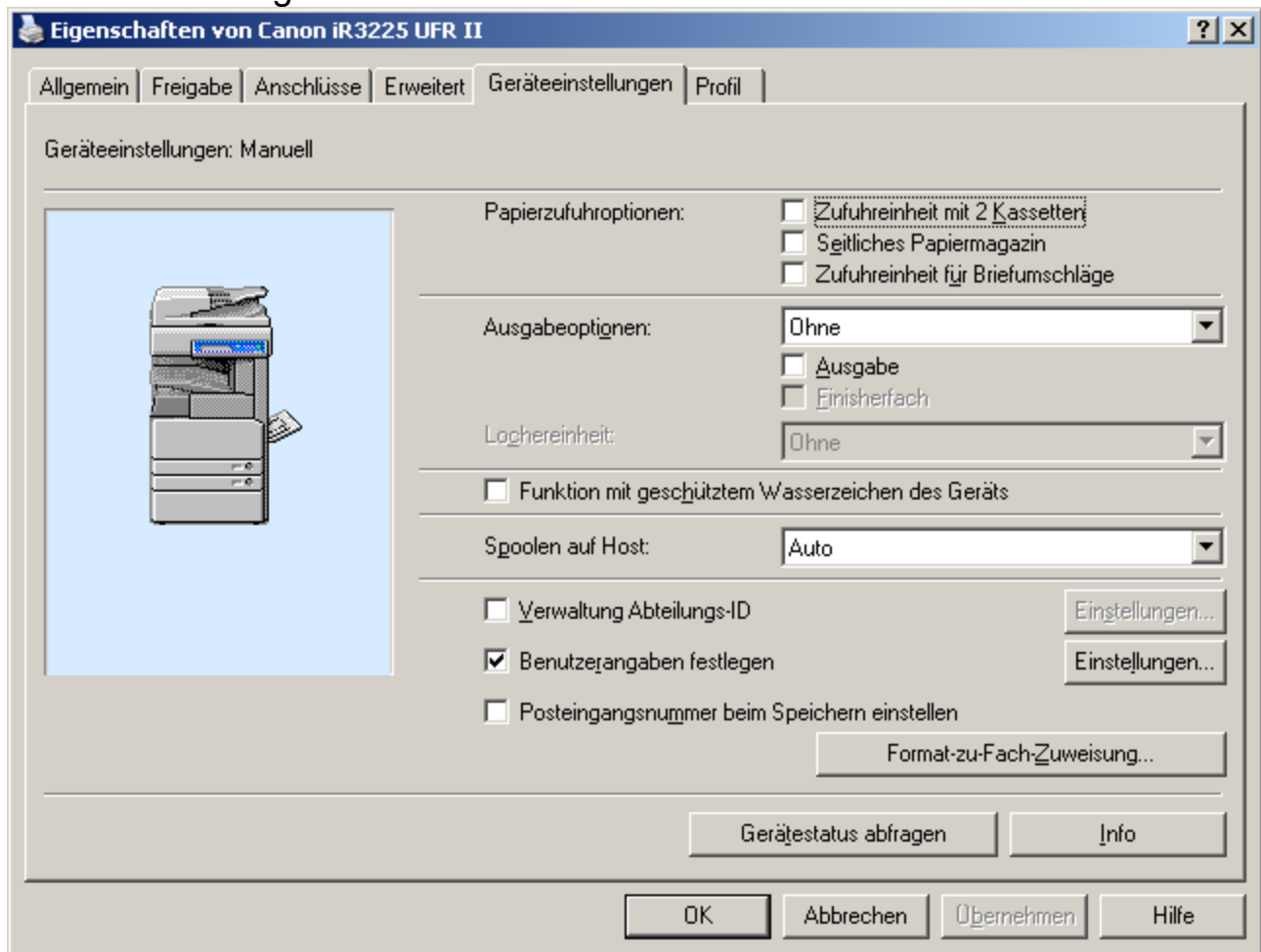
Starten



Ja

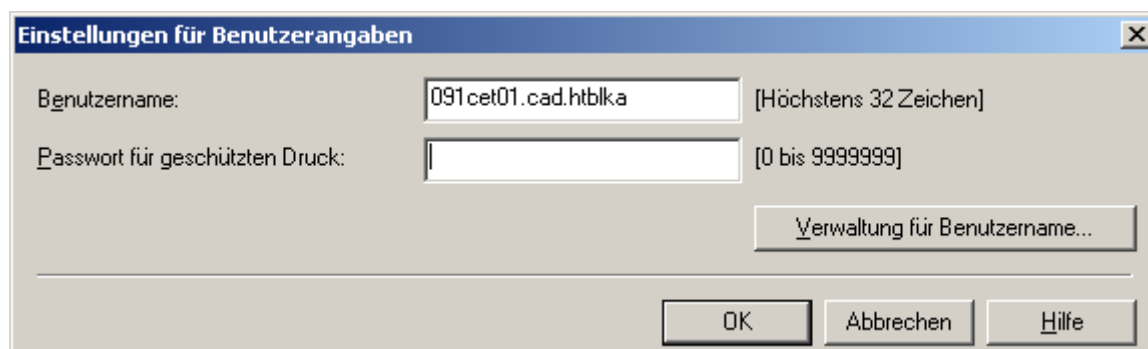


Druckertreiber Canon iR3225 UFR II – Rechts-click – Eigenschaften – Geräteeinstellungen



Einstellungen

Eigenen Benutzernamen eintragen



Fertig